



Infinitum IEs Software Manual

V1, October 2022

Table of Contents

.....	1
Motor Drive Control Software	3
Preparation.....	3
Connection GUI	5
Serial Operation:	8
Firmware Update:	9
Parameter Settings.....	10

Motor Drive Control Software

The motor control software allows the user the ability to utilize the advanced functions of the Infinitum IES motor. The motor control software requires Windows based computers. This information is divided into the following Sections:

- [Preparation](#)
- [Set Static IP Address \(Windows 10 Professional\)](#)
- [Connection GUI](#)
- [Serial Operation](#)

Preparation

Preparation

Motor Installation & Connection

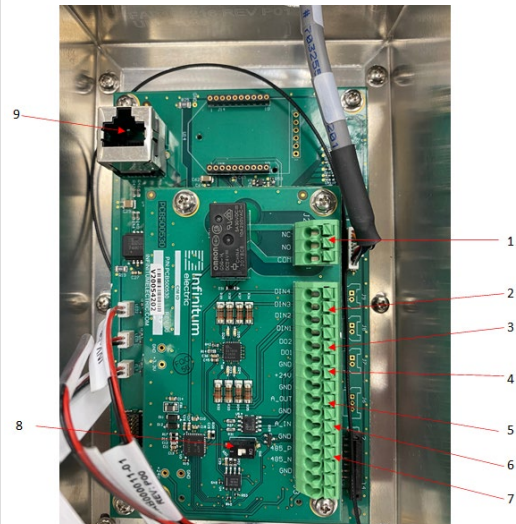
Warning

Always Tagout and Lockout the electrical motor circuit and practice all company safety procedures when installing, troubleshooting, or repairing a motor. Always verify power is secured with a multimeter prior to work. Failure to adhere to Tagout/Lock and industry standard practices can result in serious personal injury or death and equipment damage.

TCP and Serial are the two connection protocols used to communicate from a PC to an Infinitum motor. TCP utilizes a RJ45 connector (9), Serial connections are completed at the terminal block (2).

Complete the following preparation steps:

1. The motor must be installed onto an approved test bench or installed into the equipment it serves.
2. For a TCP connection, verify RJ45 female connector is connected to CAT 5, CAT 5e, CAT 6, CAT 6A or CAT 7 cable. Use connector (9) on the communication card.
3. Remove existing tagout and lockout equipment and energize motor.



Preparation

Setting Static IP Address (Windows 10 Professional)

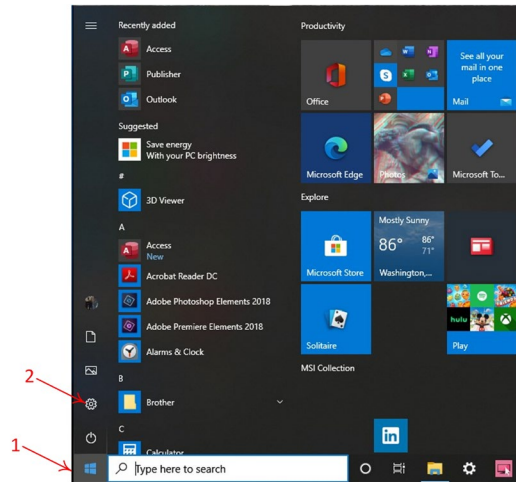
All computers that communicate with an Infinitem IES Motor must use a static IP Address.

If the correct static IP address is not configured, the computer will not communicate with the motor.

Note: Screen shots may change slightly depending on the version of Windows installed on the computer. The concept is the same with all versions. Windows 10 Professional is the operating system shown.

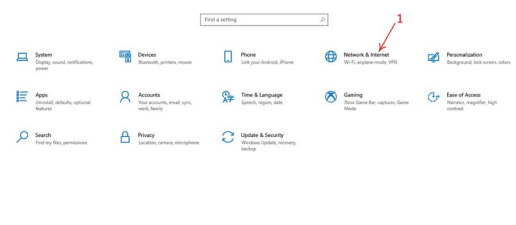
Left click Start Button (1) on bottom tool bar.

Quick Access menu appears, left click Settings icon (2).



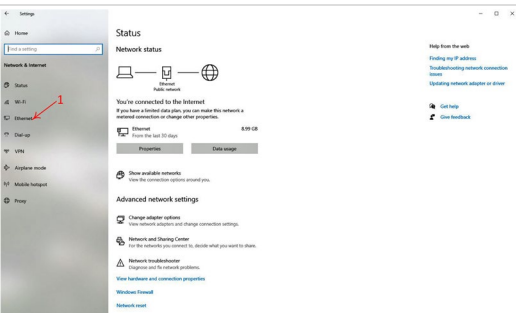
The Windows Settings screen opens.

Left click the Network & Internet icon (1).



The Network Status screen opens.

Left click the Ethernet Icon (1).

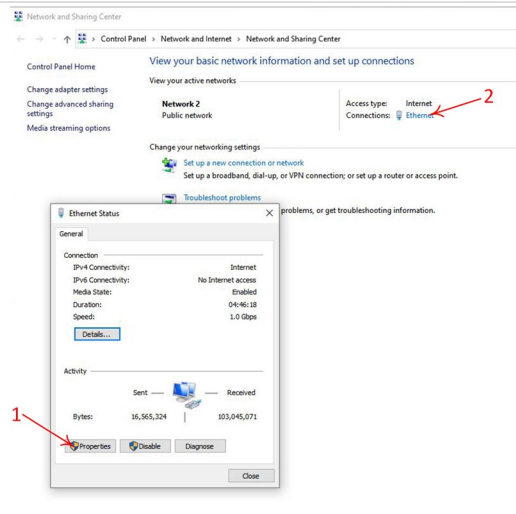


The Network and Sharing Screen opens.

Left click on the Ethernet Icon (2).

An Ethernet Status screen opens.

Left click on the Properties button (1).



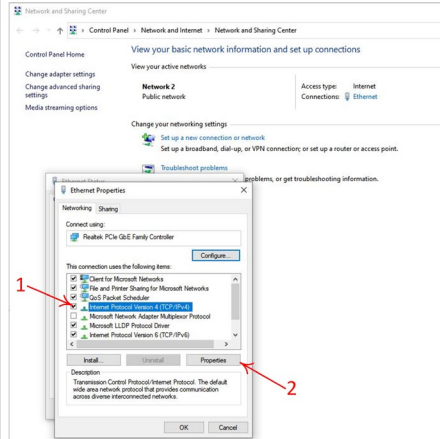
Preparation

Ethernet Properties screen opens.

Left click Internet protocol Version 4 (1).

The selection is highlighted.

Click the Properties button (2).



The Internet Protocol Version 4 (TCP/IPv4) screen opens.

The default selection is “Obtain an IP address automatically.”

Left click Use the following IP address (1).

Enter 172.17.20.153 into the IP address (2).

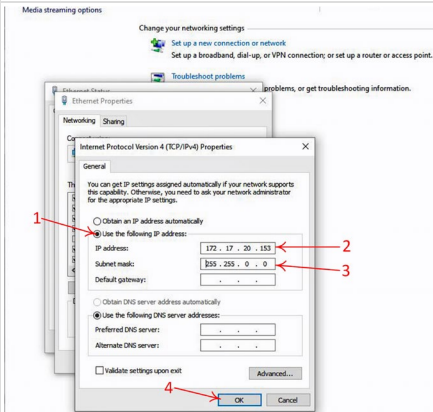
Enter 255.255.0.0 into the Subnet mask (3).

Left click the OK button (4).

Close all windows opened when setting the static IP address.

Go to [Infinitum Support](#) to view the video of this process.

The default selection of “Obtain an IP address automatically” must be reestablished if computer connectivity via Ethernet is desired.



Connection GUI

Connection GUI

Install Software

Install the provided Motor Drive Control software onto a laptop, or desktop computer. This computer must be Windows based. The latest software and download instructions are found on the [Infinitum Support](#) page. There is a SW Installer on the support page. Follow the instructions in the Installer. This website location is protected, so an Infinitum login is required to access.

To run the Motor Drive Control Software on a Windows computer, you will need to install Windows x86 .NET Core SDK v3.1.423.

This SDK can be found here: <https://dotnet.microsoft.com/en-us/download/dotnet/thank-you/sdk-3.1.423-windows-x86-installer>

After installing the SDK, restart your computer for the installation changes to take effect.

The Motor Drive Control Software is installed on the laptop or computer: C:\Program Files (x86)\Infinitum-MotorControlGUI. The installer also creates a shortcut to the software on the desktop of the computer.

Connection to Motor (Ethernet)

Connect a standard ethernet cable from the laptop/PC to the motor. This computer requires the static IP address mentioned above. The ethernet connection on the Infinitum motor is on the CIM card, accessible when the VFD access port or VFD cover is removed (depends on version of the VFD).

Connection to Motor (Serial)

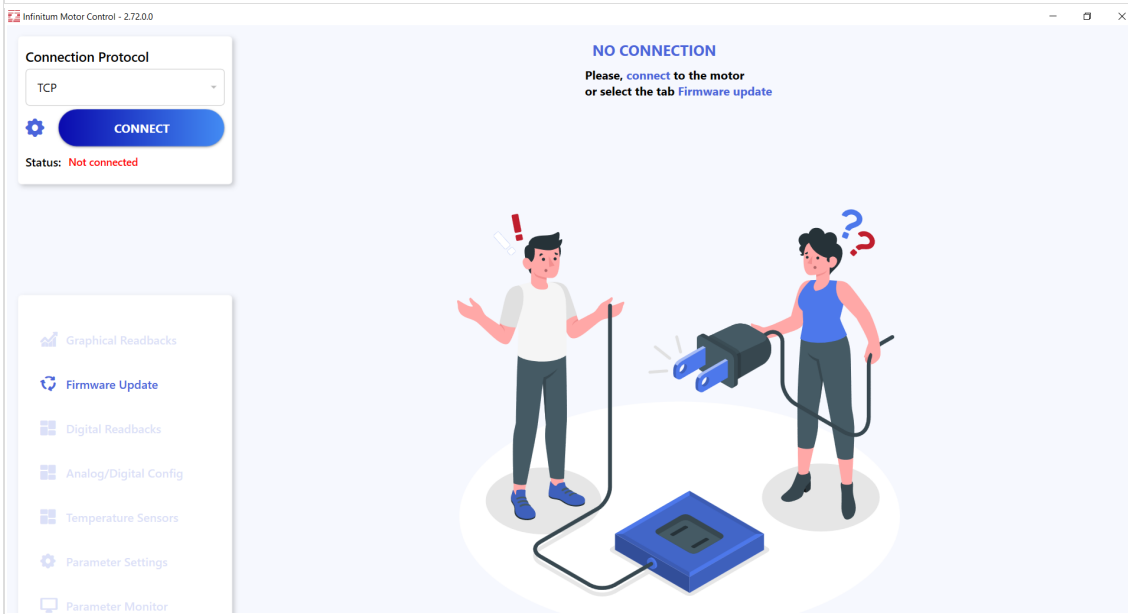
Connect a serial cable from the laptop/PC to the motor. The serial connection on the Infinitum motor is on the CIM card, accessible when the VFD access port or VFD cover is removed (depends on version of the VFD). The Serial connections are identified as 485_P, 485_N, and GND on the CIM silkscreen by the access port. Polarity must be maintained from the VFD access port to the computer.

Powering on the Motor

The Motor Drive Control software needs to “Connect” to the motor for control. This connection is a two-way handshake between the application running on the computer and the firmware running in the motor VFD. The Connection Protocol is a pull-down option in the upper left of the Motor Drive Control Software. For an ethernet connection (default) the protocol should be TCP. This connection can be changed to “Serial” if a serial connection is desired.

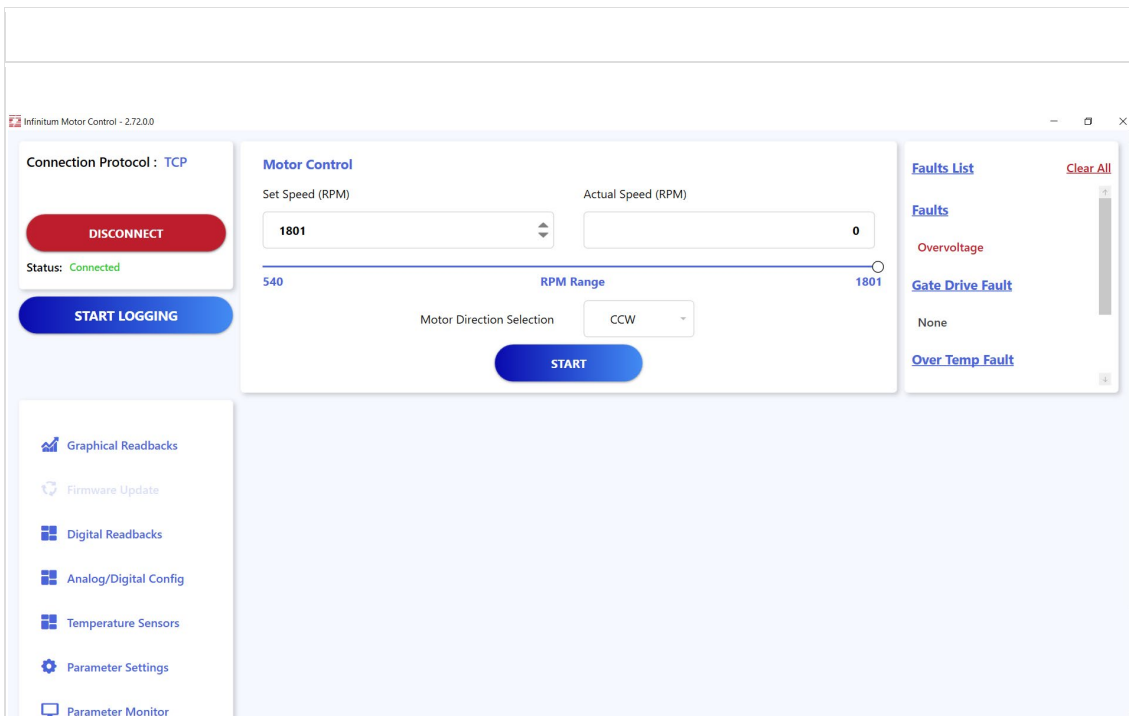
If the Motor Drive Control software is running on the computer, the connection with the motor will be established when the motor is powered on. The “Status” will go from “Not Connected” to “Connected” once this connection is established.

If the motor is powered on after the Motor Control software is started, the connection must be established manually. To establish this connection, use the Connect button in the upper left of the GUI as shown in the image below.



Once the motor is connected to the computer, the “Status” in the upper left box should indicate “Connected” in green text as indicated in the next photo.

Once “Connected”, the connect button changes to a red “DISCONNECT” button. This button is used to break the connection between the GUI and the motor as noted in the image below:



While connected, the following data can be set or read by the Motor Drive Control Software for parameters of the motor.

The upper portion of the Motor Drive Control Software window is for real-time motor information. The lower portion is to set motor parameters.

Real-time motor information: Upper portion of window

Logging: Real-time data logging. If logging is selected the Motor Drive Control Software will prompt for a directory to record the log file. The log file is a standard Windows CSV file.

Motor Control Allows Speed and Direction control: Set Speed, Actual Speed, RPM range, Motor Direction, Start/Stop

Faults: Operational faults and restart options

User Information: Lower section of window. Some information below may look slightly different due to different versions of the Communications Interface Module (CIM) and Inverter board firmware.

Graphical Readbacks: Displays selected operational parameters in graphical format. X and Y axis values are user settable. Options include Stator Temperature, Power Output, DC Bus Voltage, Average Current, and Torque. The graph Period is selectable (30 sec – 1 hr. in 15 min increments)

Digital Readbacks Displays actual motor operating parameters and fault/warning messages: DC Voltage (V), Average Current (A), Stator Temp (°C), Power Output (W), and Torque (Nm)

Analog/Digital Config. Displays values for motor functions including Analog In 1 Function, Analog In 1 Minimum Setting, Analog In 1 Maximum Setting, Analog In 1 Type, Analog Out 1 Function, Analog Out 1 Type, Digital In 1 Function, Digital In 2 Function, Digital In 3 Function, Digital In 4 Function, Digital Out 1 Function, Digital Out 2 Function

Temperature Sensors: Realtime information on Stator RTD Temp (°C), Inverter Board Temp (°C), Heat Sink (Internal Case) Temp (°C), CIM Temp (°C)

Parameter Settings: User configurable options ([see table below](#)) for Operating Limits, Operation Type, Communication Settings, Fault Reset, Terminal Settings, Fail Over Settings.

Remember to use the “Apply” button to save this information in the motor if you change any values.

Parameter Monitor: Displays live information on settings established by the Parameter Setting function. These include Operating Limits (Speed Absolute Minimum, Speed Absolute Maximum, Max Acceleration, Max Deceleration), Monitor-Electrical (DC Bus Input Power, Average RMS Current), Monitor – Performance (Output Torque, Output Power), Monitor - Operating (Start/Stop Actual, Direction Actual, Speed Actual), Monitor – AI/AO (AI1 Value, AO1 Value), Monitor – DI/DO (DI1 Value, DI2 Value, DI3 Value, DI4 Value, DO1 Value)

Motor Information (Displays motor operating information. This section cannot be changed by users): Motor serial number, Rated Speed (rpm), Consumed Power (MWh), Drive Run Time (hr.), Tiva (firmware) Version, Inverter (firmware) Version

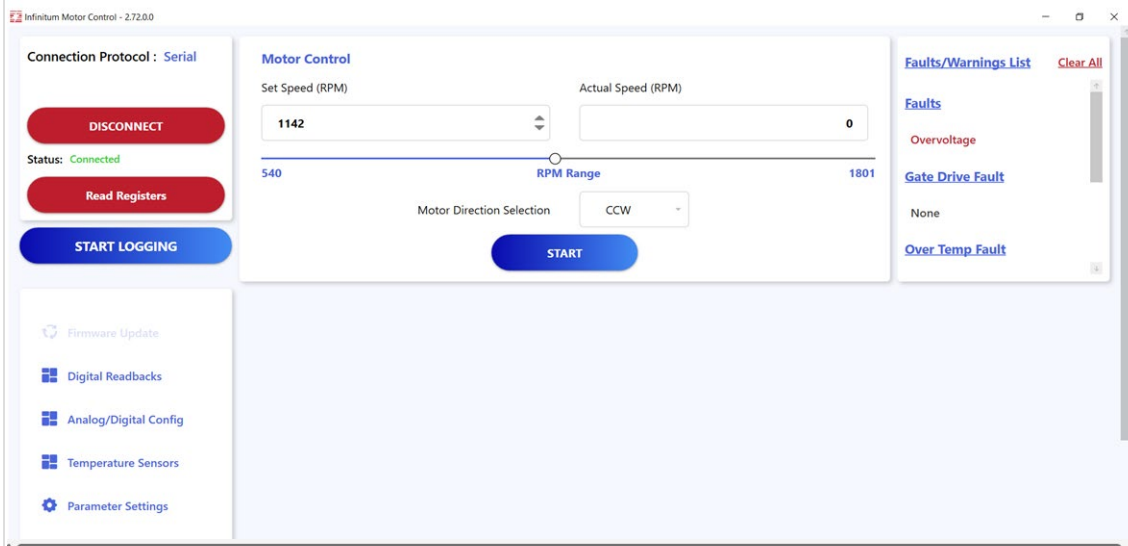
Support: [Link to Infinitum support](#)

All information and setting options are available via pull-down settings or direct numerical input into the software. For more information, see the [IEs Motor Drive Control Software Overview Video](#) on the Infinitum support site. It is in the “Videos” section. We recommend viewing the Motor Drive Control Software video before starting your motor.

After setting the correct parameter settings, you can “START” your motor. After starting, the motor runtime information will be displayed including the “Actual Speed”, the Motor Information windows, the Graphical Readbacks, and Digital Readbacks.

Serial Operation:

If utilizing a Serial connection between the IEs motor and the computer, operational information is not updated in real-time using the Motor Drive Control Software. Parameter Monitor and other information must be updated by the user to see “snapshots” of the motor’s operational parameters. To refresh the displayed values, press the “Read Registers” button in the upper left window of the Motor Drive Control software display. See the image below:



Pressing the Read Registers button will refresh all the displayed information.

Firmware Update:

Firmware for the boards in the motor is the programmed software for the Infinitum Motor Control. Updating the firmware can add extra capabilities and fix bugs that occur during operation in the field and testing. The firmware files must be requested from Infinitum.

The motor cannot be “Connected” during a firmware update. Make sure the blue Connect button (1) is visible. The motor should be powered on. If red Disconnect button is visible, click it to disconnect motor.

The Firmware Update button should now be visible.

The following updates can be made:

- Kernel File (3) - Inverter software
- Application File (2) - Inverter software
- Tiva File (1) - Tiva Control software.

Download the file(s) you wish to update from the Infinitum support website to your PC or laptop, then use the “Select Files to Upload” feature to upload the specific files you wish to change into the Motor Drive Control Software. Individual items may be left blank. Once all desired files are uploaded hit the CONNECT button (beside the blue Upload button). There should be green text displaying “Connected.”

Now, hit the UPLOAD button to move the selected files from the PC/Laptop to the motor.

The Status window should start updating to show upload progress.

Once the update is complete, the Firmware Update window closes.

The motor can be connected to the Motor Drive Control Software after update is complete using the CONNECT button in the top Connection Protocol box.

Parameter Settings

This section defines motor drive settings that can be updated by users via the Motor Drive Control Software.

Operating Limits	Definition	Values
Speed – User Minimum	User defined minimum speed	New speed must be between Absolute Minimum and Absolute Maximum
Speed – User Maximum	User defined maximum speed	New speed must be between Absolute Minimum and Absolute Maximum
Acceleration Ramp (sec)	Ramp time to maximum speed	30 – 90 (sec)
Deceleration Ramp (sec)	Ramp time to minimum speed	30 – 90 (sec)
Skip Speed 1	Avoids operation at this speed	Speed must be between User Minimum and User Maximum
Skip Speed 2	Avoids operation at this speed	Speed must be between User Minimum and User Maximum
Skip Speed 3	Avoids operation at this speed	Speed must be between User Minimum and User Maximum
Skip Speed Bandwidth	Bandwidth for speed ranges to be avoided in SKIP SPEED selection	30 RPM, 60 RPM, 120 RPM
Direction Allowed	Shaft Rotation options	CW, CCW

Operation Type	Definition	Values
Control Mode	Sourced for control signals	Analog/Digital or Modbus
Speed Input Source	Speed control mechanisms	Modbus, ANALOG, DI1 and DI2, DI2 and DI3, DI3 and DI4
Start/Stop Input Source	Selects source for Start/Stop	Modbus, DI1, DI2, DI3, DI4
Direction Input Source	Selects source for Direction	Modbus, DI1, DI2, DI3, DI4
Clear Fault Input Source	Selects source for fault reset command	Modbus, DI1, DI2, DI3, DI4

Communication Settings	Definition	Values
RTU Slave Address	Modbus RTU Slave address	0-247
RTU Baud Rate	Modbus RTU Baud Rate	1200, 2400,4800, 9600, 19200,38400, 57600,76800,115200
RTU Parity	Modbus Parity	None, Even, Odd
IoT Update Rate	IoT Refresh Rate (IoT is optional)	60-32767 (sec)

Fault Reset	Definition	Values
Number of Attempts	Defines number of automatic fault reset attempts	0-10, 99 (infinite)
Reset Delay (Seconds)	Defines time between successive automatic reset attempts	0-120 (seconds)

Terminal Settings	Definition	Values
AI1 Function	Analog In 1 selection	Speed
AI1 Minimum Setting	Defines percent value corresponding to minimum mA(V) signal for analog input AI1	80 = 0 to 80% (0 to 16 mA) 100 = 0 to 100% (0 to 20 mA)
AI1 Maximum Setting	Defines percent value corresponding to minimum mA(V) signal for analog input AI1	80 = 0 to 80% (0 to 16 mA) 100 = 0 to 100% (0 to 20 mA)
AI1 Type	Analog Input Type selector	Voltage, Current
Constant Speed 1 (rpm)	Speed motor operates at when corresponding combination of digital inputs are activated	
Constant Speed 2 (rpm)	Speed motor operates at when corresponding combination of digital inputs are activated	
Constant Speed 3 (rpm)	Speed motor operates at when corresponding combination of digital inputs are activated	
Constant Speed 4 (rpm)	Speed motor operates at when corresponding combination of digital inputs are activated	
AO1 Function	Connects motor signal to analog output AO1) Note: Analog Out is not available on -C motors	Speed, Torque, Power, Current, 10V (Potentiometer)
AO1 Type	Type of Analog Output	Voltage, Current
DO1 Function	Selects motor status indicated by corresponding output	None, Active, Fault
DO2 Function	Selects motor status indicated by corresponding output	None, Active, Fault

Fail Over Settings	Definition	Values
Modbus Monitor Enable	User option to Enable or Disable Fail Over Feature	Enable, Disable
Modbus Monitor Timeout	Time before fail over feature is implemented after loss of communication	1-3600 (seconds)
Modbus Monitor Stop	Selectable options for process to follow for communication loss	Implement Fail Over Speed, Stop Motor
Modbus Monitor Resume	Preferred action on communication restoration	Resume previous speed, Disable
Modbus Monitor Speed	Fail-over speed if communication loss occurs Modbus Monitor Stop is set to Implement Fail Over Speed	Speed must be between User Minimum and User Maximum