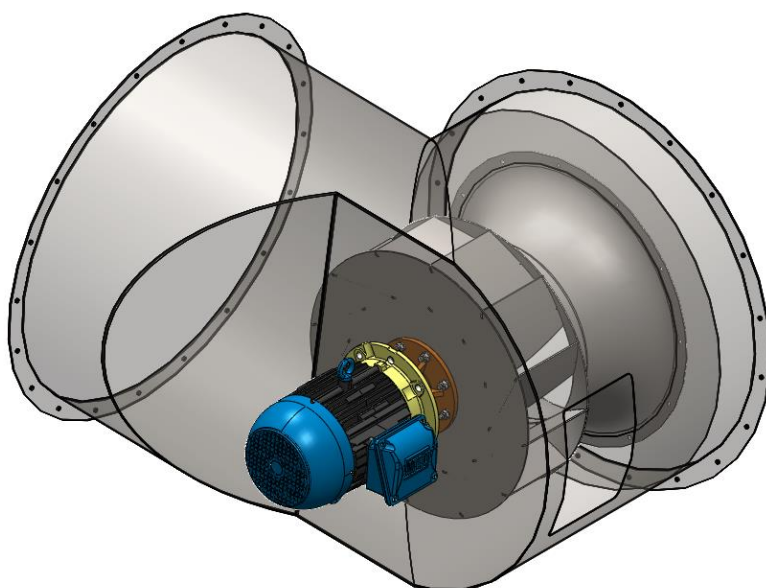
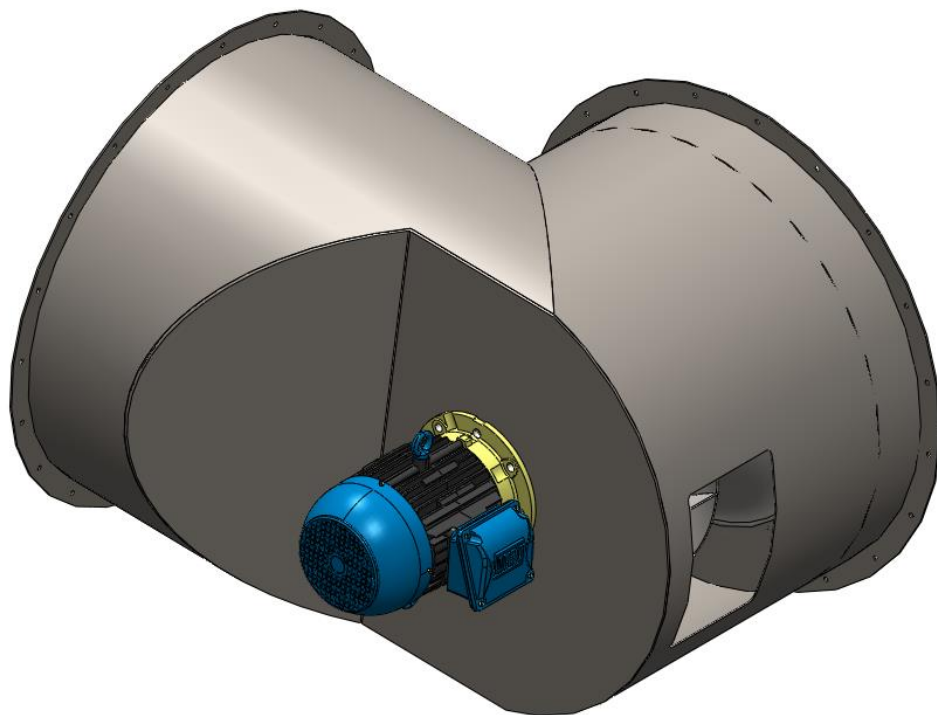
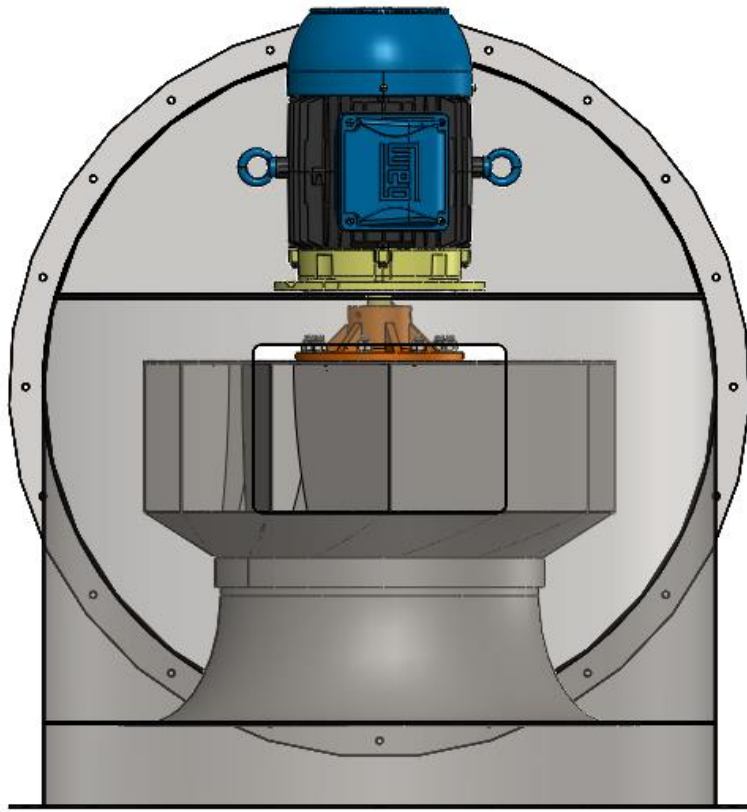
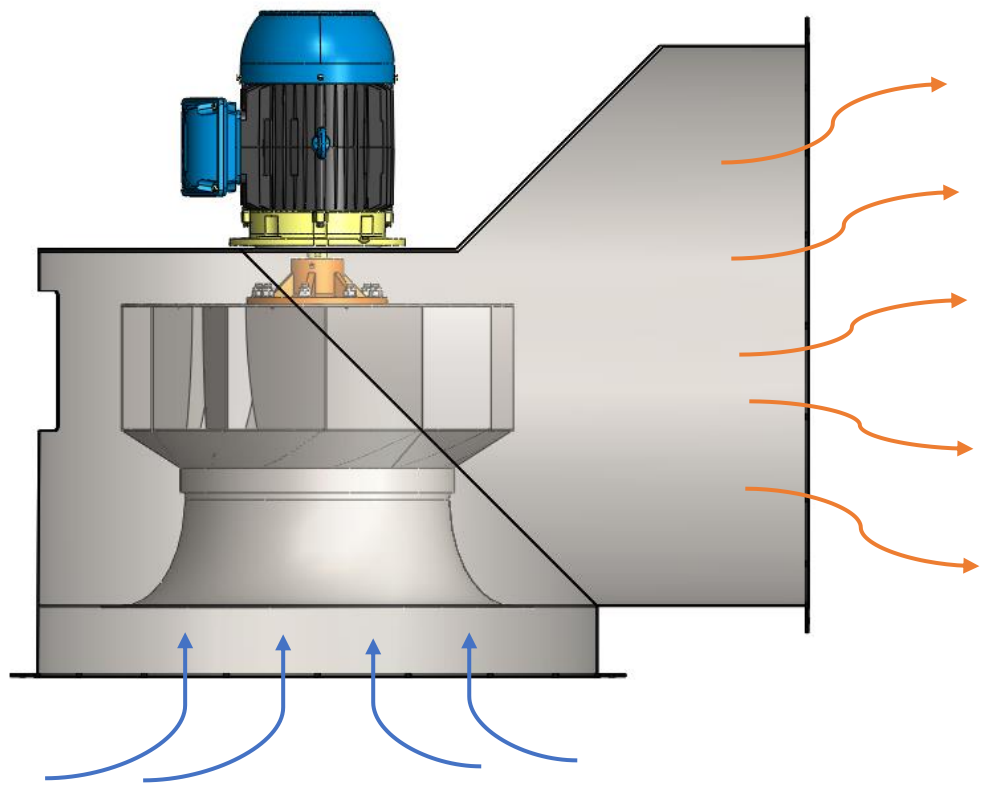
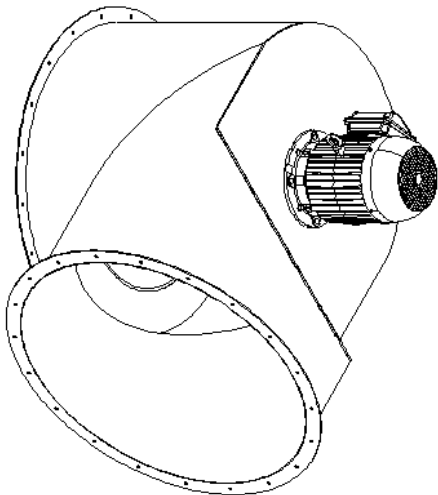
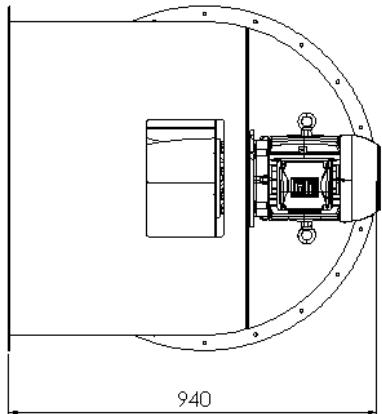
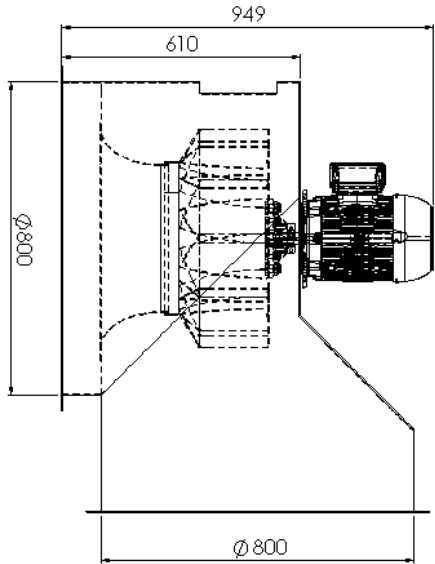
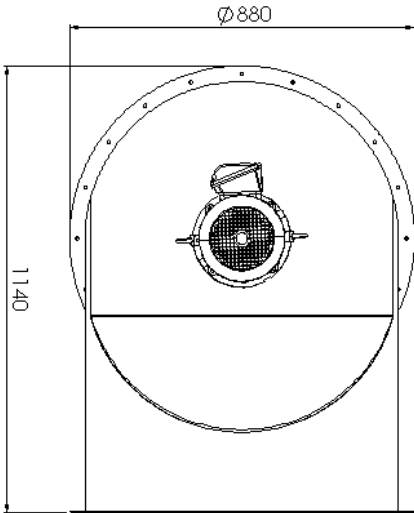



OPÇÃO 1 – MODELO SEMELHANTE AO CTL. CARCAÇA FABRICADA EM AÇO, FORMATO DUTO REDONDO. COM UMA ANGULAÇÃO DE 90° ENTRE DUTOS. O MOTOR FICA FORA DO FLUXO. O MODELO DE EXEMPLO É UM 560. O DIÂMETRO DO DUTO É DE 800mm, CONFORME DEFAULT DO CTL.



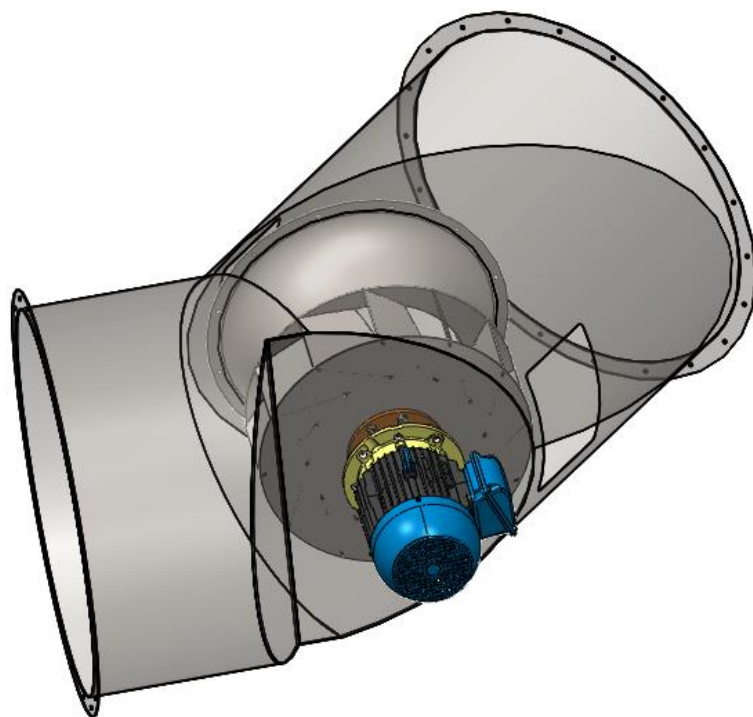


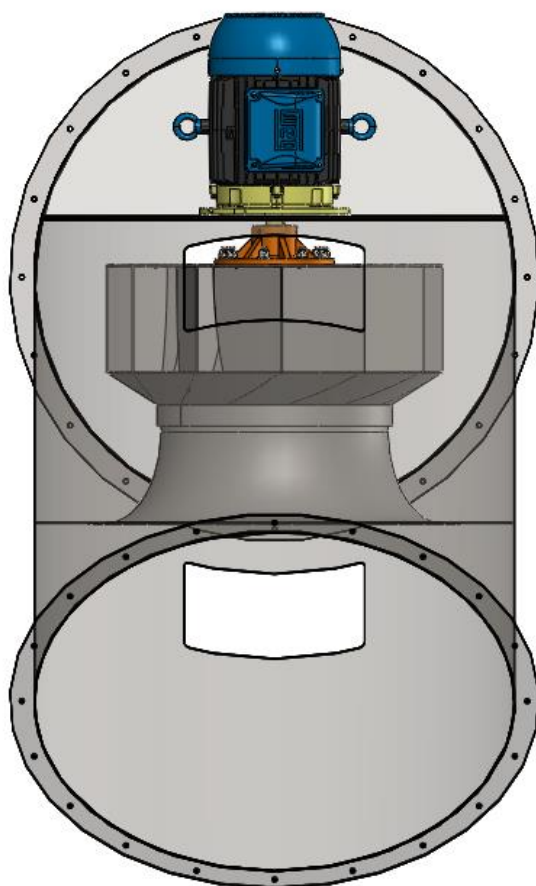
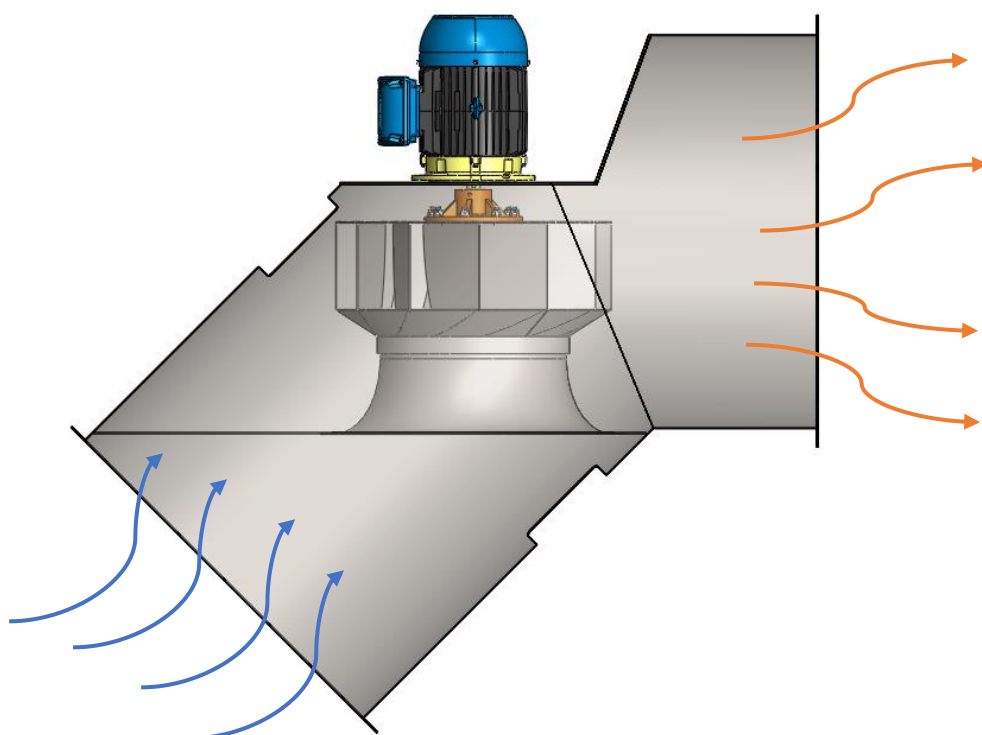
TOLERÂNCIAS GERAIS (NBR ISO 2768-1)														
Dimensões de comprimento					Tol. e Cotas					Dimensões Angulares				
Classes de tolerância	0,3 a 3	3 a 6	6 a 30	30 a 120	Classes de tolerância	0,3 a 3	3 a 6	6 a 10	10 a 30	Classes de tolerância	10 a 30	30 a 120	120 a 400	>400
Média	±0,1	±0,2	±0,3	±0,5	Média	±0,2	±0,3	±1	±1*	Ângulos	±0°30'	±0°30'	±0°10'	±0°5'

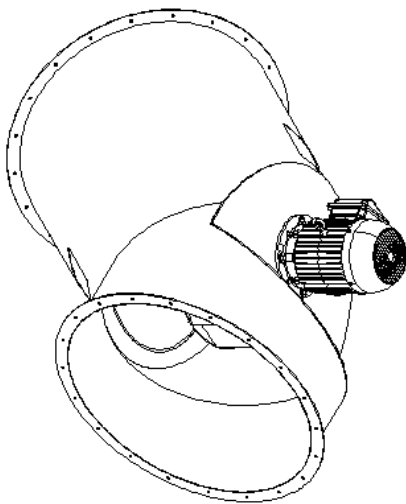
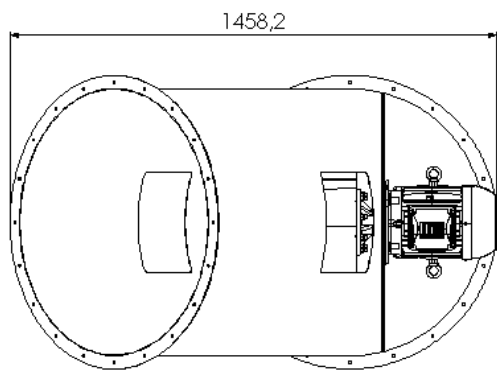
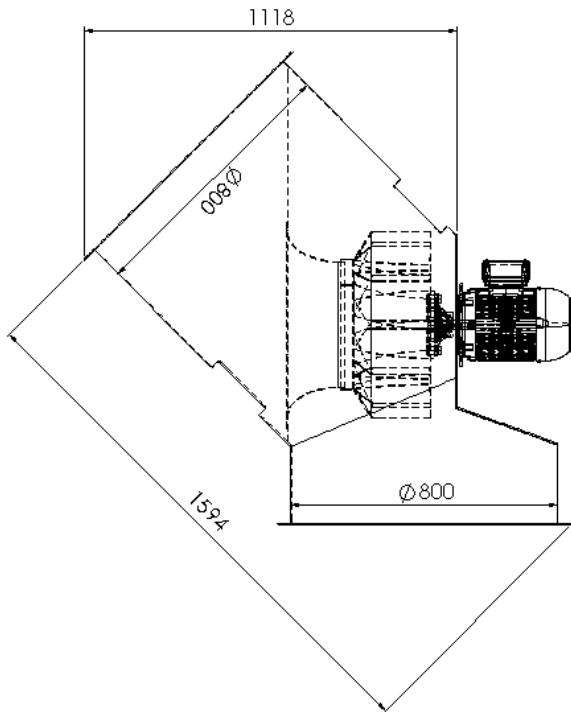




	Código		Descrição		Material		Acabamento		Tolerância		Desenho		Data	
	C190		Ventilador		Aço		Pintura		1:10		1/1		A3	

OPÇÃO 2 – MODELO SEMELHANTE AO CTL. CARCAÇA FABRICADA EM AÇO, FORMATO DUTO REDONDO. COM UMA ANGULAÇÃO DE 135° ENTRE DUTOS. O MOTOR FICA FORA DO FLUXO. O MODELO DE EXEMPLO É UM 560. O DIÂMETRO DO DUTO É DE 800mm, CONFORME DEFAULT DO CTL.

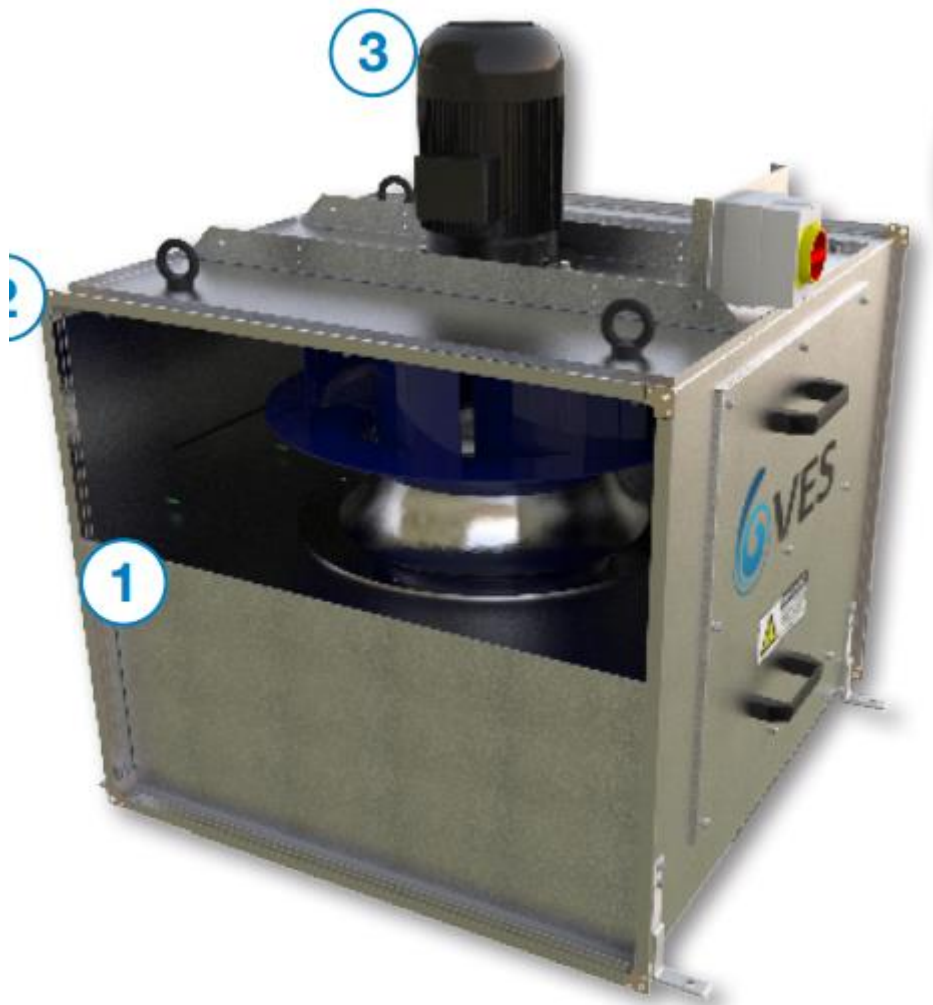






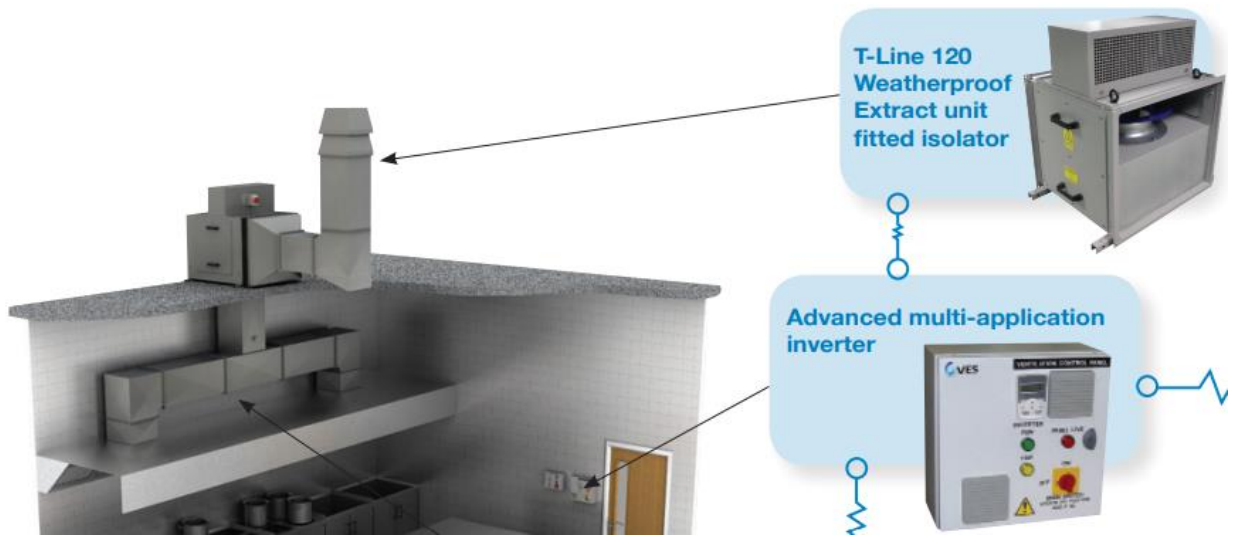
CÓDIGO	BRASILCÃO
CTL135	
DESCRIÇÃO:	AEROLACLO
MATERIAL:	PREFILHO PROFIT
APR. SUPORTE M/T	DEC 1,5
PRELIM. EOP	1,12
	1 / 1
	
	 A3

OPÇÃO 3 – CONFORME MODELOS DO MERCADO.



Unit configuration

Units can be supplied as straight through (PH/WH) or L shaped (PL/WL) configurations. Plantroom units can be mounted for vertical air flow.



Welding bay application



BKF 315D4-8-XL/F400

Centrifugal rectangular duct fan, 400°C/2h

Item Number: 95690

Variant: 400V 3~ 50Hz - 4-pol - YY (Dahlander)

Dual purpose fans: normal ventilation plus smoke and heat extract

- 400°C/120 min (F400)
- Continuous operation up to 120°C media
- Casing made of zinc-magnesium coated steel (ZM)
- Backward curved impeller made from pre-galvanized steel or from steel and galvanized
- Motor outside the air stream
- Single speed IE2 motors (IE1 exceptions at some items up to 0,55 kW and 8 pole) resp. two speed motors
- PTC serial built-in motor
- Certified according EN 12101-3 by BSI
- Installation possible in all positions, flange connection 30 mm
- Installation outside building or inside building, outside fire zone in well ventilated rooms

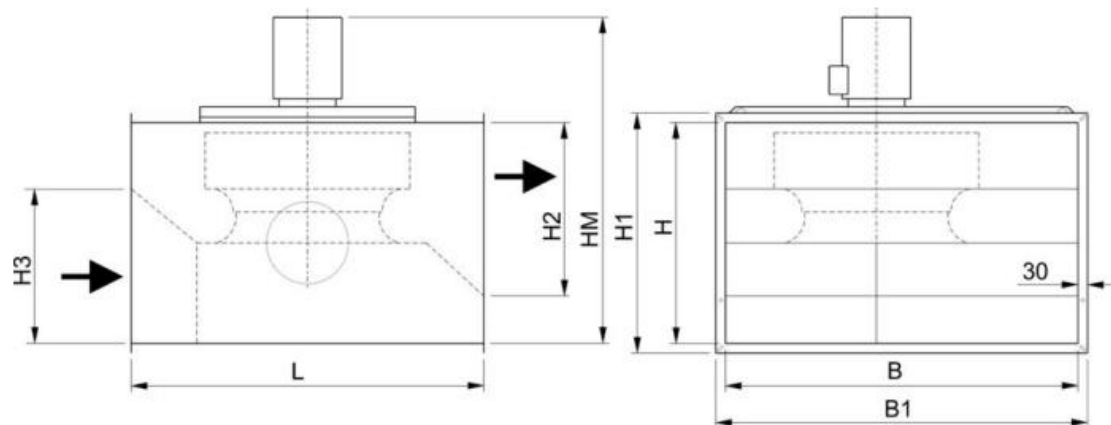
BKF smoke and heat extract fans are used in case of fire to extract smoke gases and also during normal working conditions for standard ventilation. Smoke free escape routes assist egress and provide clear access points for fire departments. Extracting poisonous and hot gases also make fire extinguishing easier and reduce the damage on the building.

Applications: malls, garages, warehouses, kitchen exhaust...

Generally suitable for ambient temperature -20 to +40°C (depending on specific motor load the permissible ambient temperature may be increased - on request)



Dimension



	B	H	L	B1	H1	H2	H3	~HM
BKF 315D4-XL, D6-XL, D4-6-XL, D4-8-XL	630	400	710	690	460	-	-	641